

### Inside the kit

- Power supply: 12VDC
- Power consumption: 12VDC/150mA
- Touch Interface: 3.5 inch
- Power supply to HMI cable length: 80 cm
- Cable lengths HMI to electronic box: 50 cm



### Compatibility

- The drop size are compatible with the HMI: 4 $\mu$ m, 8 $\mu$ m, 12 $\mu$ m or 40 $\mu$ m

### Control features

- Real-time user guide on interface
- Free Control Mode
- Maintenance
- Loop Time Cycle Control

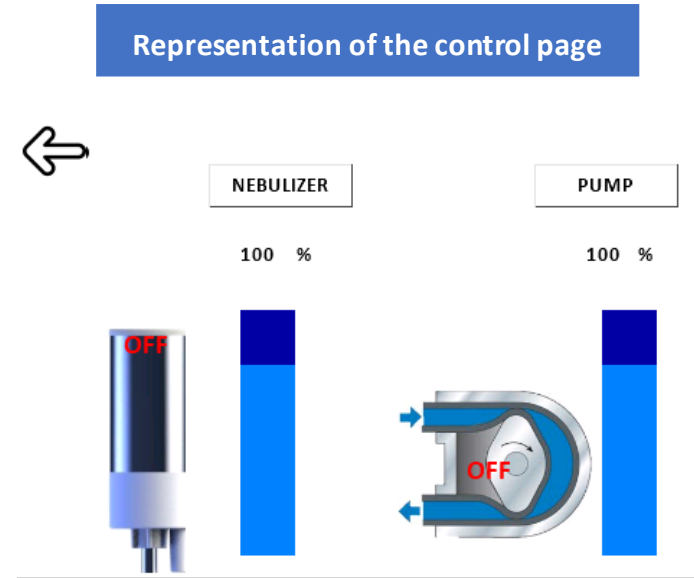
### Specific function and design

- Customization and modification of the HMI interface if necessary

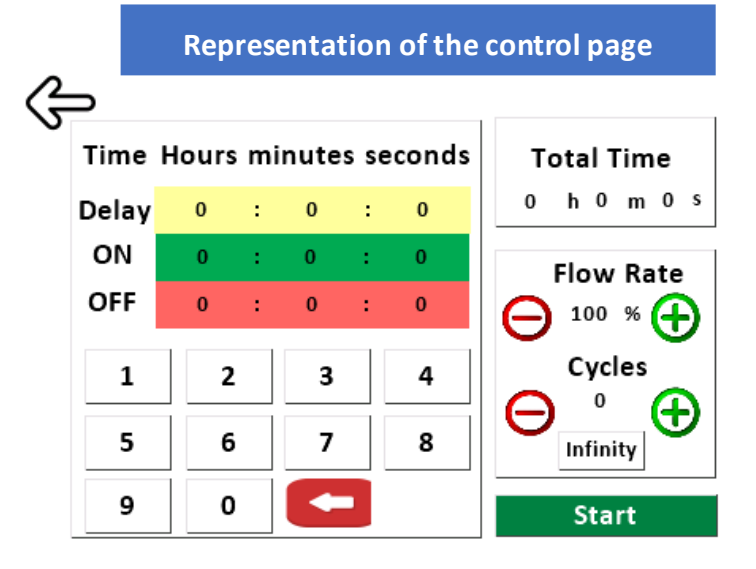
# Touch screen control: HMI P&S MXX PLUG&SPRAY

## Control specifications

HMI P&S MXX Control features : Free Control Mode	
<b>Nebulizer and Pump</b>	Touch On/Off
<b>Flow rate Pump</b>	Use the slider to change the flow rate of the pump (Variation from 30% to 100%)
<b>Flow rate Nebulizer</b>	Use the slider to change the flow rate of the nebulizer (Variation from 0% to 100%)



HMI P&S MXX Control features : Loop Time Cycle Control	
<b>Flow rate</b>	Press "+" or "-" to select the nebulizer flow rate (0% to 100% variation).
<b>Delay</b>	Choice of x (seconds/minutes/ hours) which will correspond to the time before the beginning of a cycle.
<b>On/Off Cycle</b>	Choice of x (seconds/minutes/hours) ON and x (seconds/minutes/hours) OFF which will correspond to the activation and stop time after the end of the timer.
<b>Number of cycles or infinite</b>	Choose a number of cycles with the "+" or "-" buttons or select the "infinite" button to choose an infinite cycle. When the "infinite" button is activated, the number of cycles displayed is 0. Please deactivate the "infinite" button to choose a number of cycles.



To choose a time, first select the case and press the keyboard for the desired value.

# Touch screen control: HMI P&S MXX PLUG&SPRAY

## IHM P&S MXX content and DIMENSIONS



**HMI P&S MXX**  
Dimensions : 136x84x44.2mm



RCA Cable :50cm



BNC Cable :50cm



12V Power Supply : 80 cm



DC-DC :50cm Cable